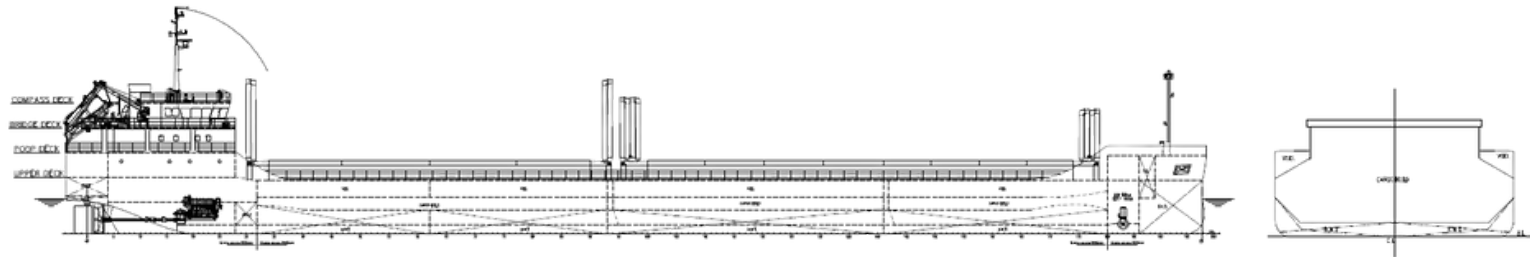


MV ELBE RIVER

GRONA SHIPPING



DESCRIPTION

BULK CARRIER VESSEL FOR INLAND WATER WAYS AND RESTRICTED NAVIGATION AREA OF CATEGORY SUMMER ZONE, TWIN SCREW DIESEL ENGINE DRIVEN, DOUBLE BOTTOM BOX-SHAPED THREE CARGO HOLDS WITH STEEL WATERTIGHT PONTOON TYPE HATCH COVERS. ONE BOW RAMP DOOR IS PROVIDED AT BOW.

PRINCIPAL DIMENSIONS:

LENGTH OVERALL ~129.00 M
LENGTH BETWEEN PERPENDICULARS 126.10 M
BREADTH, MLD. 16.90 M
DEPTH, MLD. 6.05 M
DESIGN DRAFT, 4.00 M
DEADWEIGHT@ DESIGN DRAFT ABOUT 5300 T
DEADWEIGHT@ 3.6M ABOUT 4020 T
GROSS TONNAGE ABOUT 3954

TANK CAPACITIES:

MARINE DIESEL OIL : ABOUT 250 M3
FRESH WATER TANKS : ABOUT 60 M3
BALLAST WATER TANKS : ABOUT 2,000 M3

CARGO HOLD:

NO.1 CARGO HOLD VOLUME : ABOUT 2100 M3
NO.2 CARGO HOLD VOLUME : ABOUT 2300 M3
NO.3 CARGO HOLD VOLUME : ABOUT 3300 M3
CARGO HOLD COAMING HEIGHT : ABOUT 1.7 M
CARGO HOLD COAMING BREADTH : ABOUT 12.0 M

SPEED AND CONSUMPTION

SPEED (@DESIGN DRAFT, 85% MCR + 15% SM) :
10.5 KNOTS 8.3 T/DAY

THE ABOVE SPEED SHALL BE BASED ON THE VESSEL WITH CLEAN HULL IN DEEP AND CALM WATER (NO WIND, NO WAVE) AND WITHOUT CURRENTS.

ENDURANCE

ENDURANCE SHALL BE APPROX. 6,000 NAUTICAL MILES ON THE BASIS OF SERVICE SPEED 10.5 KN AT THE DESIGN DRAFT 4.0M

CLASSIFICATION

CLASS : BUREAU VERITAS OR CCS EQUIVALENT NOTATION
CLASS NOTATION : C, ⚡ HULL, ⚡ MACH, BULK CARRIER, SPECIAL NAVIGATION*, AUT-UMS, COAT-WBT, INWATER SURVEY, MON-SHAFT, ICE**

*: UNRESTRICTED IN SUMMER ZONE, LIMITED TO 100 MILES FROM PORT OF REFUGE WHEN NAVIGATION IN WINTER ZONE AS DEFINED IN ILLC 1966, AND WITH MAXIMUM SIGNIFICANT WAVE HEIGHT 7M.

** : HULL STRENGTHENED IN ACCORDANCE WITH THE REQUIREMENTS OF "ICE CLASS 1" NOTATION ACCORDING TO RMRS, ("ICE II" ACC. TO FIN/SWE, OR ICE B IN CCS) .

FLAG : MADEIRA